

ANNÉES 1920-1930

RÉFÉRENTIEL

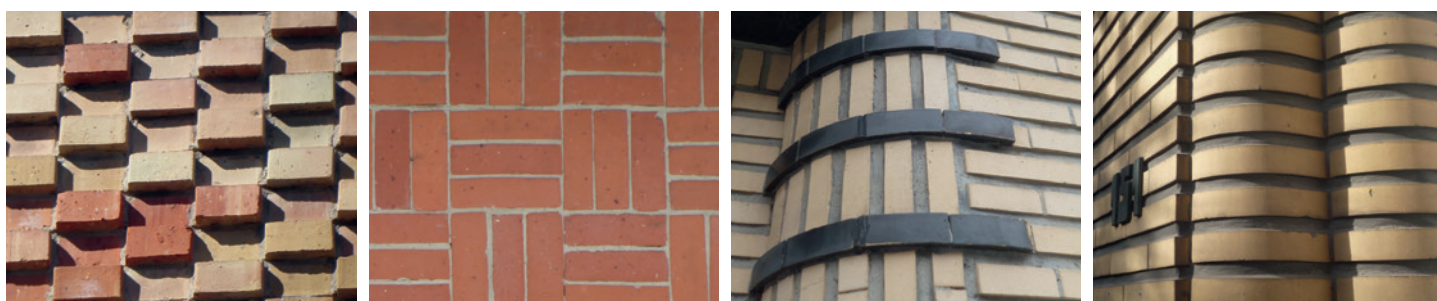
carreaux de céramique émaillés



mosaïque



jeux de briques



granito



fer forgé



vitraux



pierre sculptée



enduit moulé



sculpture de béton



JAREN 1920-1930

STIJLWIJZER

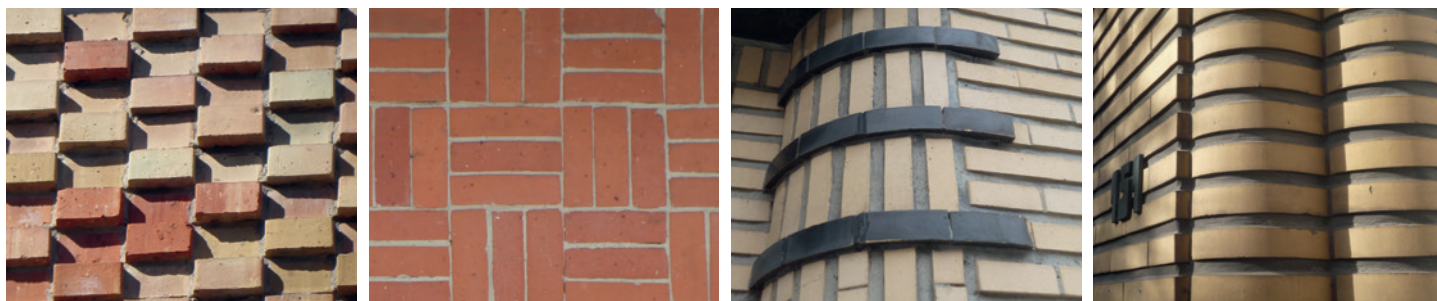
geëmailleerde keramiektegels



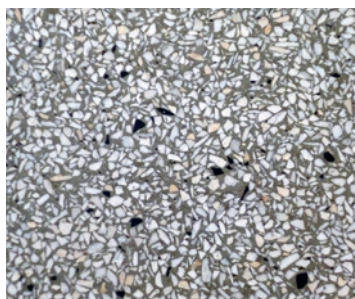
mozaïek



spel van bakstenen



granito



ijzerwerk



glas-in-loodraam



stenen beeldhouwwerk



gegoten sierelement



betonnen beeldhouwwerk



ANNÉES 1950-1960

RÉFÉRENTIEL

schiste



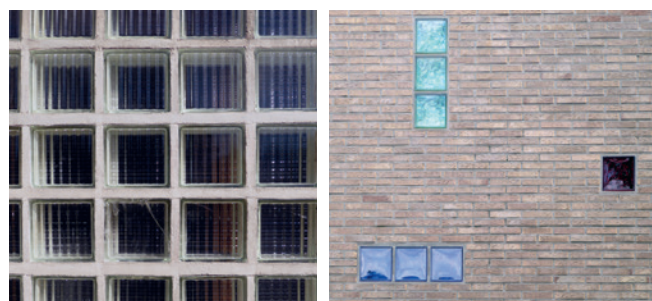
briquettes de schiste



briques vernissées



briques de verre



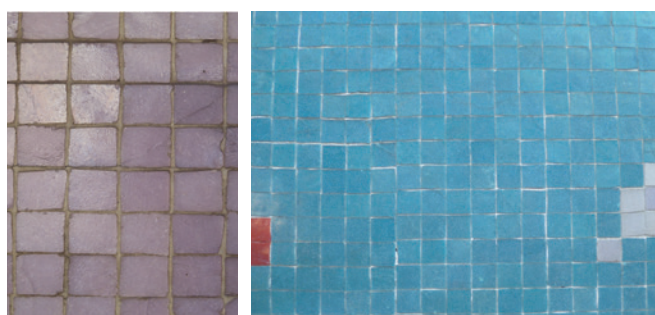
béton



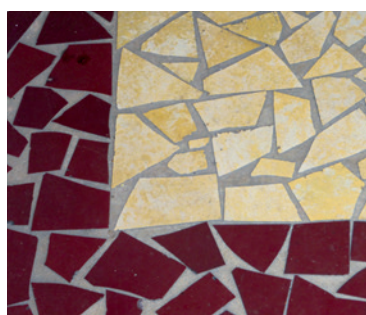
béton lavé



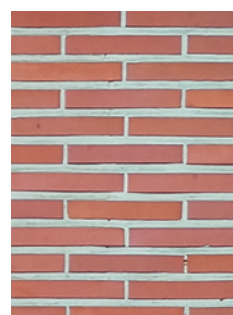
mosaïque en pâte de verre



cassons de céramique



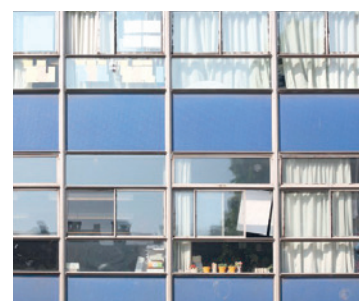
briques plates



aluminium



panneaux sandwich



plastique



bois peint



émaux colorés



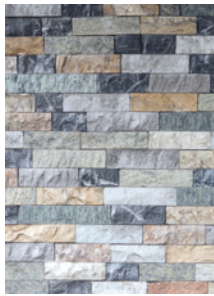
JAREN 1950–1960

STIJLWIJZER

leisteen



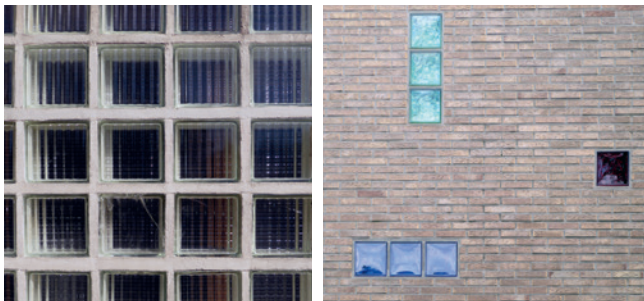
leisteen briket



geglazuurde baksteen



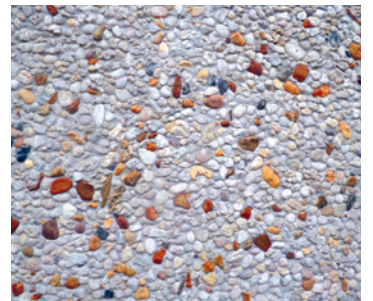
glastegels



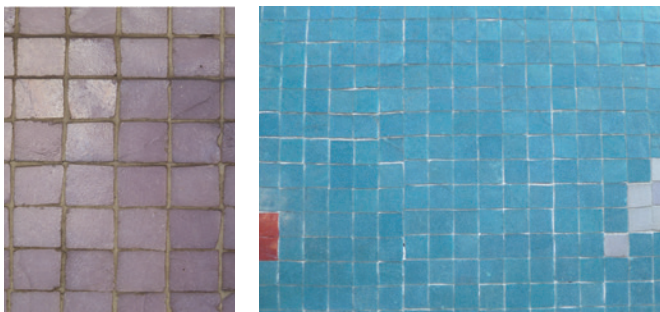
beton



gewassen beton



mozaïek in glaspasta



keramiekscherven/-stukjes platte bakstenen



aluminium



sandwichpaneel



plastic



geschilderd hout



gekleurd email

